

CITIZEN

Micro HumanTech

Great performance - Small price CT-S310: breaking the mould for POS printer pricing



Standard type

Dual Interface -

USB is default in addition to serial or parallel interface boards. This makes the CT-S310 a future-proof investment.



Internal Power Supply -

All 80mm POS printers from Citizen offer an internal power supply. The CT-S310 has an detachable one. Once taken off it is the smallest POS printer in its class.

CITIZEN CT-S310

POS

Applications

- Receipt
- Coupon
- Ticket
- Daily report
- Kitchen
- Delivery slip
- Barcode
- Weigh scales
- Kiosk



Easy paper loading

Just drop paper in and close the top cover.



Available in black



Vertical solution

CITIZEN

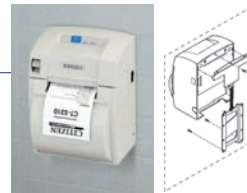
Micro HumanTech

Options

Wall Mount kit

Available for external AC adapter type only.

WALL-CTS300



Splash proof cover

Available for built-in AC adapter type only.

SPROOF-CTS300



Interface cards



Parallel (TA66811-0)



Serial (TB66832-00F)

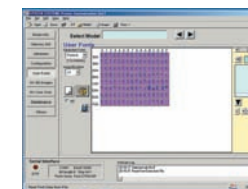
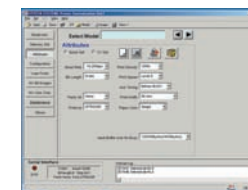
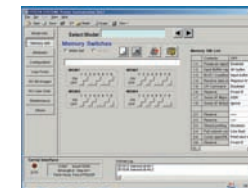
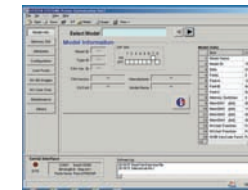


Ethernet (950053-00)

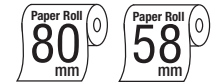
Specifications

Printing method	Line thermal dot printing
Printing width	80mm paper: 72mm/576 dots 58mm paper: 48mm/384 dots
Dot pitch	8 x 8 dots/mm (203 dpi x 203 dpi)
Printing speed	Max. 150mm/sec. (23.6 lines/sec.)
Number of columns	80mm paper: Font A-48/42 columns, Font B-64/56 columns, Font C-72/63 columns 58mm paper: Font A-32/30 columns, Font B-42/40 columns, Font C-48/45 columns
Character size (WxH)	Font A: 1.25 x 3.00mm (12 x 24 dots) Font B: 0.88 x 2.13mm (9 x 17 dots) Font C: 0.88 x 2.00mm (8 x 16 dots)
Character table	Code page 437, 850, 852, 8 57, 858, 860, 863, 864, 865, 866, Katakana, WPC1252, Thai code 18
Barcode type	UPC-A/E, JAN-13/8, ITF, Code 39, Code 128, CODABAR, Code 93
Line spacing	4.23mm (1/6 inch); can be set by a command.
Paper	Thermal paper roll, 80 or 58mm (W) x Ø83mm
Interface	Parallel (IEEE 1284) & USB, Serial (RS-232C) & USB
Input buffer	4K bytes / 45 bytes
NV user memory	256K bytes
Drawer kick-out	2 Drawers
Power supply	DC 24V±7%
AC adapter	Input: AC 100-230V, 50/60 Hz, 120VA Output: DC 24V, 2A DC 24V, ± 7% (DC power supply type)
Weight	Approx. 1.2kg
Dimensions (W x D x H)	Standard type: 145x195x159mm External AC adapter type: 145x195x121mm
Operating environment	5~40°C, 35~85% RH
Storage environment	-20~60°C, 10~90% RH
Reliability	Thermal head: 100,000,000 pulses or 100km Auto cutter: 1,000,000 cuts
EMC and safety standards	UL, C-UL, FCC Class A, TUV-GS, CE marking

Customization Software



Features



- 150mm/sec. high-speed printing
- 80/58mm selectable paper width
- Easy paper loading
- Cutter (full/partial)
- Optional interface cards
- USB is default in addition to Serial or Parallel interface board
- Built-in AC adaptor
- Black mark function (option)
- Cash drawer kick-out
- Bitmap data registration (NV memory)
- Barcode printing
- ESC/POS compatibility
- Page mode
- Two color printing
- Smoothing font
- Easy customization by software
- Available in white or black
- Driver: Windows2000/XP/Vista/2003 Server, OPOS 1.8, CUPS

Type Classification

CT-S310 S RS E WH M1

1) 2) 3) 4) 5) 6)

- | | | | | | |
|---------------------------------|--|---|--|--|---|
| 1) Model type
CT-S310 | 2) Power supply
A: External AC adapter
S: Built-in power supply | 3) Interface
PA: Parallel (IEEE1284) & USB
RS: Serial (RS-232C) & USB
UB: USB | 4) Character set
U: USA
E: Europe | 5) Body case color
WH: Cool white
BK: Black | 6) Label/Black mark
None: Standard (No sensor)
M1: Left side black mark
M2: Right side black mark |
|---------------------------------|--|---|--|--|---|